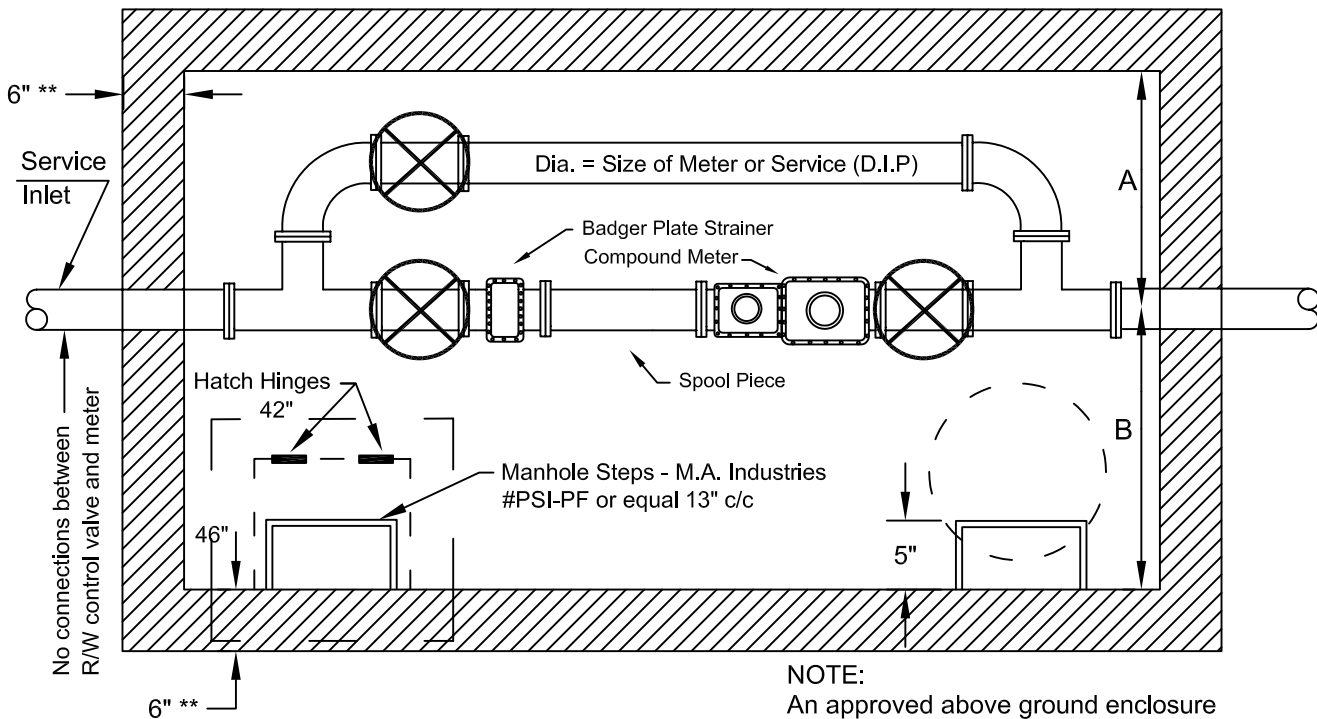


NOTE:  
All Meter Vaults Shall Be Pre-Approved by EHRWSD



NOTE:  
An approved above ground enclosure such as the Hot Box may be used in lieu of a meter pit.

\*\* For Precast Approved Meter Pits

Size	Inside Vault Dimension		Meter Length			Meter Capacity - GPM		Minimum Wall Clearance	
	Main Meter Length	Main Meter Width	CMP	Strainer	Spool Piece	Maximum Continuous Flow	Maximum Intermittent Flow	A	B
2'	7'-0"	5'-0"	15 1/4"	7"	10"	170	200	2'-6"	2'-6"
3'	8'-0"	5'-0"	17"	7"	15"	400	450	2'-6"	2'-6"
4"	9'-0"	6'-0"	20"	9"	20"	800	1,000	3'-0"	3'-0"
6"	11'-0"	8'-0"	24"	9"	30"	1,500	2,000	4'-0"	4'-0"
8"	14'-0"	9'-0"	41 7/8"	14"	40"	3,500	4,500	4'-6"	4'-6"

Dimensions shown are face to face. Allowances must be provided for the thickness of the gaskets to be used. Contractor is responsible for furnishing and installing meter pit and piping.